

DURA

INTERNATIONAL[®]

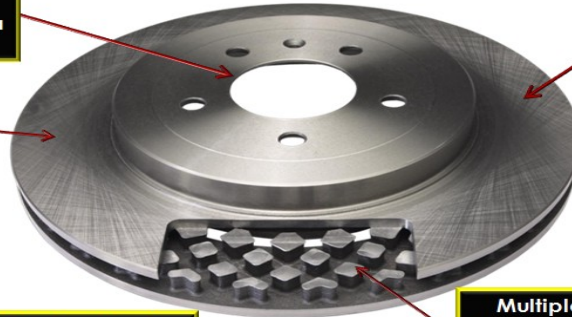
ROTORS & DRUMS

UNMATCHED QUALITY AT COMPETITIVE PRICE

Design - ROTOR CONSTRUCTION

Precise hub hole chamfer ensures a hub centric fit

Castings engineered to high metallurgical standards for consistent quality, strength and performance



Non-Directional swirl finish eliminating the need for machining prior to installation

Unique Designs Are Showing Up On Many Late Model Rotors
Example: Dura Part # BR900372

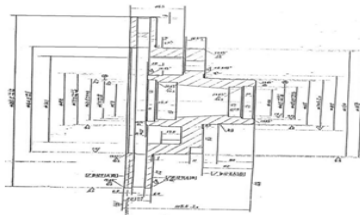
Multiple vane configurations force out hot air and pull in cool air for suitable heat dissipation and improved performance

Precision Manufacturing

Products Produced To SAE J431/G10 Standard

This regulates amounts of iron, pig iron and coke in steel to assure products have

STRENGTH, HIGH QUALITY & CONSISTENT PERFORMANCE



Quality Control & Testing

“Multi-Stage” QC Process Ensures Product Meet All Engineering & Construction Specifications

Factory Testing

Metallurgical Composition (SAE J431 /G10)

Run-out, Balance, Parallelism

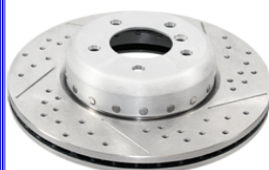
QC At Local Facilities

Independent Lab Metallurgy Testing

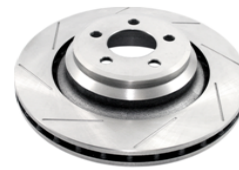
Random Testing & Measurement

Dimensional Verification

Test Run-out, Balance & Parallelism



Specialty Disc – BMW



Slotted Disc – Chrysler SRT Vehicles