

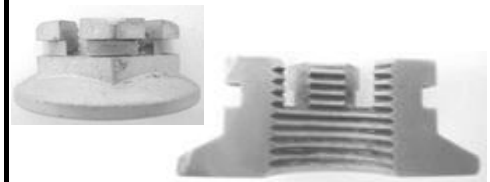
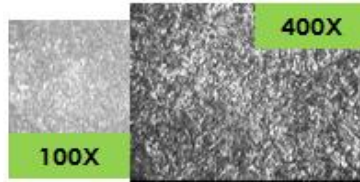
TTX BALL JOINTS WILL STAY 60% TIGHTER OVER ITS LIFECYCLE THAN ANY OTHER BALL JOINT IN THE MARKET

PWR-TEK™ Steel

Case Hardened Steel Studs

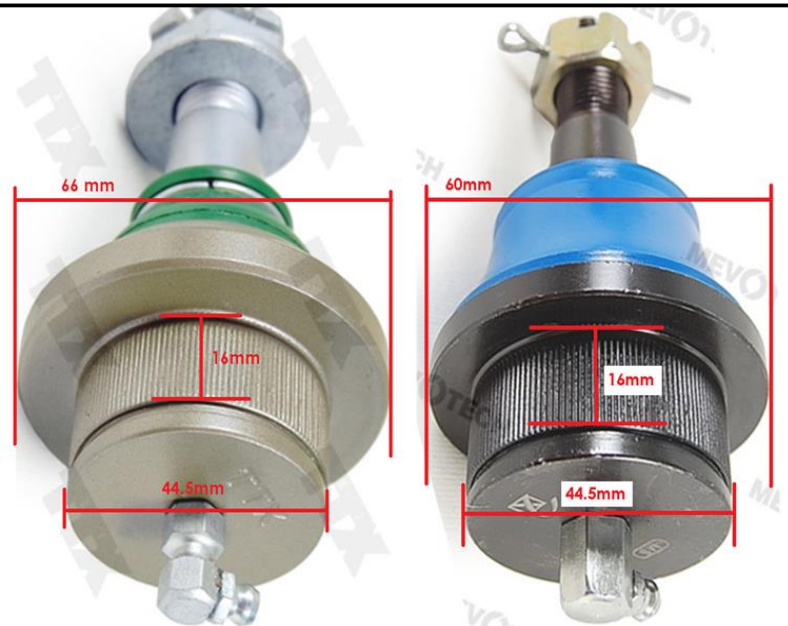
Tightest Grain Structure's

Flanged Nut For Maximum Clamp



TTX Ball Joints Use Mevotech's **PWR-TEK™ Steel**. PWR-TEK Is A Certified High Tensile Strength Metal. Components Receive Precise Heat Treatment And Curing Process. This Produces The Tightest Grain Structure For Long Life. The TTX Ball Joints Have Larger Bearings, Bigger Forgings And Flanged Nuts To Provide Maximum Performance

LARGER FLANGES - Where Applicable



TTX larger flange design provides for maximum contact area and stability. Design allows for fitment of a substantially larger upper bearing, giving this ball joint its required toughness.



Competitive

TTX UPPER BEARING

WEATHER-TECH™

15X More Corrosion Resistance



Proprietary WEATHER-TECH™ Corrosion resistant coating. Keeps rust contamination away from bearing surface

INTEGRI-BOOT™

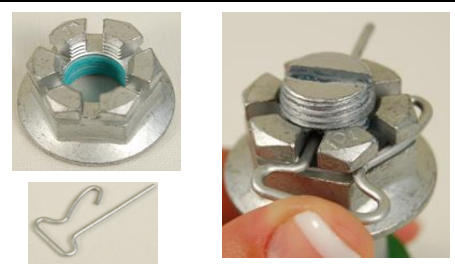
Fully Integrated Dust Boot



Boot is crimped into the ball joint for maximum protection against grease contamination. Boot is stretchable to 1300% more than typically rubber compounds found on ball joints.

EASYSNAP™ LOCKING

Tool-Less Installation



Maximum Holding With Wide Flanged Nut That Comes with Dual Micro-Encapsulated Fastener Adhesive And EASY SNAP Spring Steel Locking Clip